

izzbie

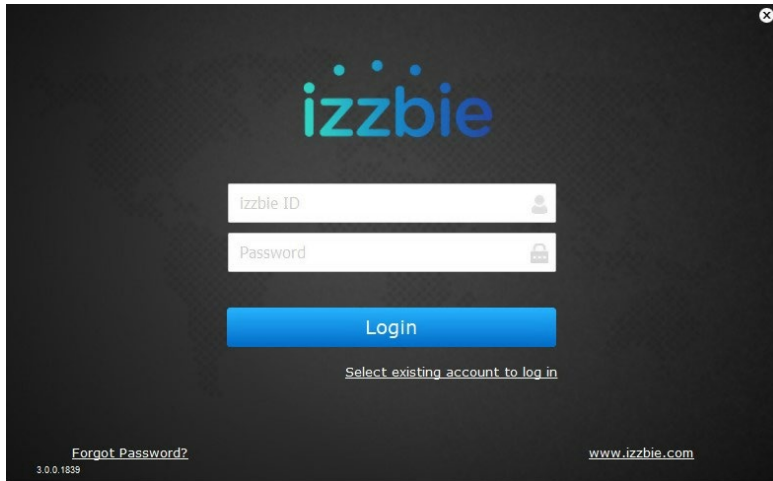


# IZZBIE APP USER'S GUIDE

## Contents

Logging into the App .....	1
Status .....	1
Nets .....	1
Devices .....	2
Nodes .....	3
Settings .....	3
Control Panel .....	4
Control Panel Member View .....	5
Control Panel Device View .....	6
Configure the izzbie ONE Device .....	7
Add Remote Access Devices .....	8

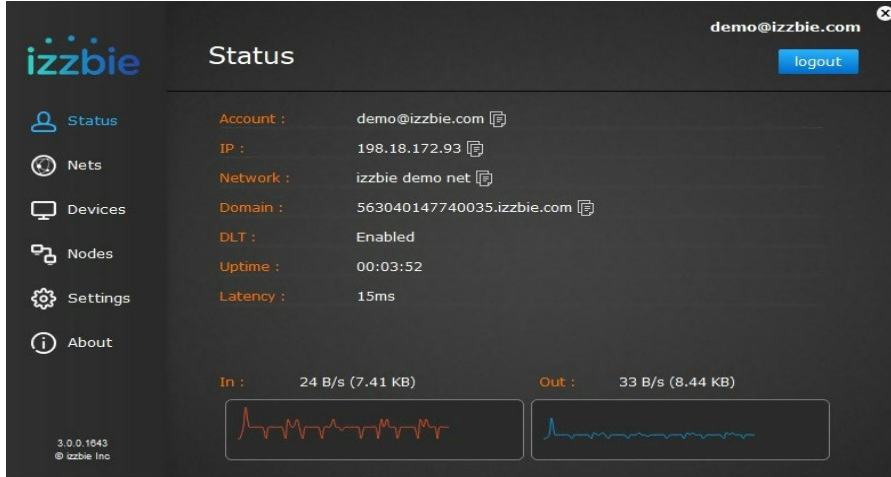
## Logging into the App



To login to the izzbie app, enter your username and password on the “Login” screen, and then click “Login,” as shown in the following illustration.

## Status

The “Status” screen, shown below, is the first screen that you see when you log in to the app.

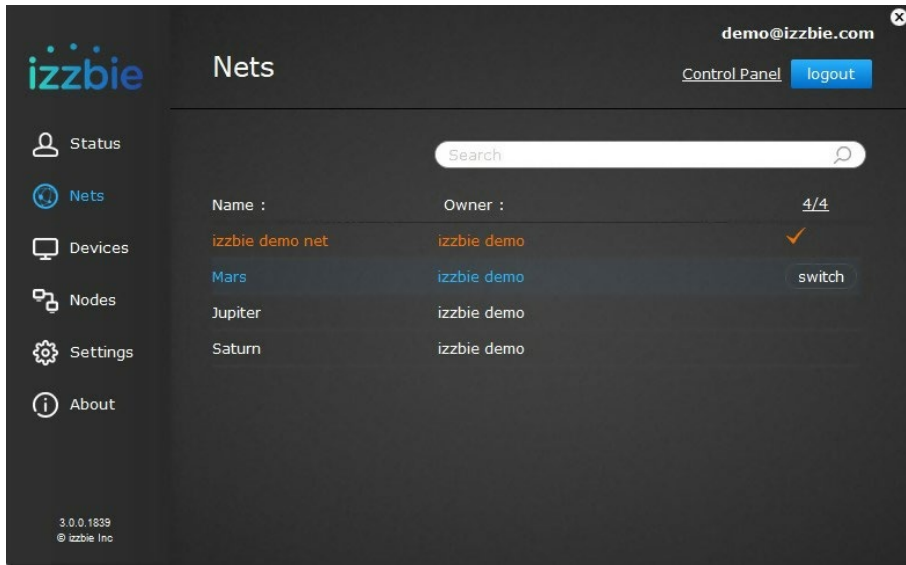


## Nets

Selecting the “Nets” option on the “Main Menu” displays the “Nets” screen, shown in the illustration below.

- A Net is a Virtual Mesh Network that is linked to a user account. By default, you have one Net.
- If you joined other users' Nets, they would be selectable here.

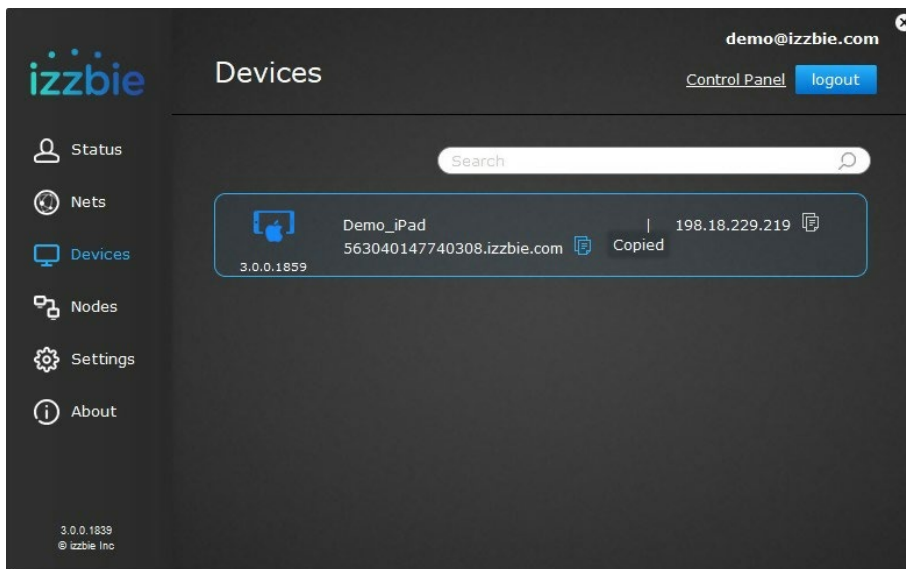
- You must switch in one of the Nets to access the networks under the Net.



## Devices

Selecting the “Devices” option on the “Main Menu” displays the “Devices” screen, as shown in the illustration below.

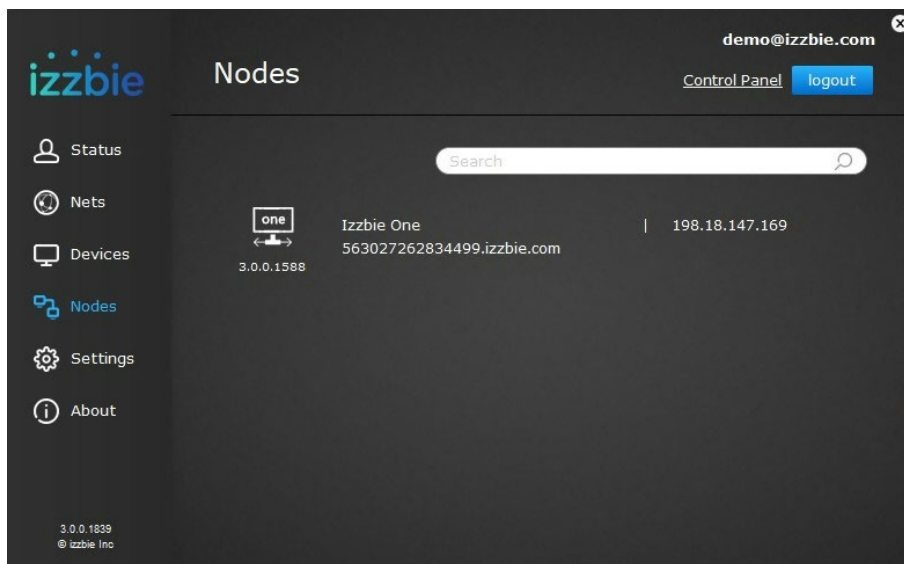
- It displays all current logon devices on the selected Virtual Net
- You may use the remote device’s Virtual Domain Name or Virtual IP to connect (for example, RDP or Map drive)
- Click the small “icon” to copy the Virtual Domain Name or Virtual IP Address.



## Nodes

Selecting the “Nodes” option on the “Main Menu” displays the “Nodes” screen, shown in the illustration below.

- All of the izzbie ONE under the Net will appear here.
- By selecting the izzbie ONE node, all of your internet traffic would route through the designated Node.



## Settings

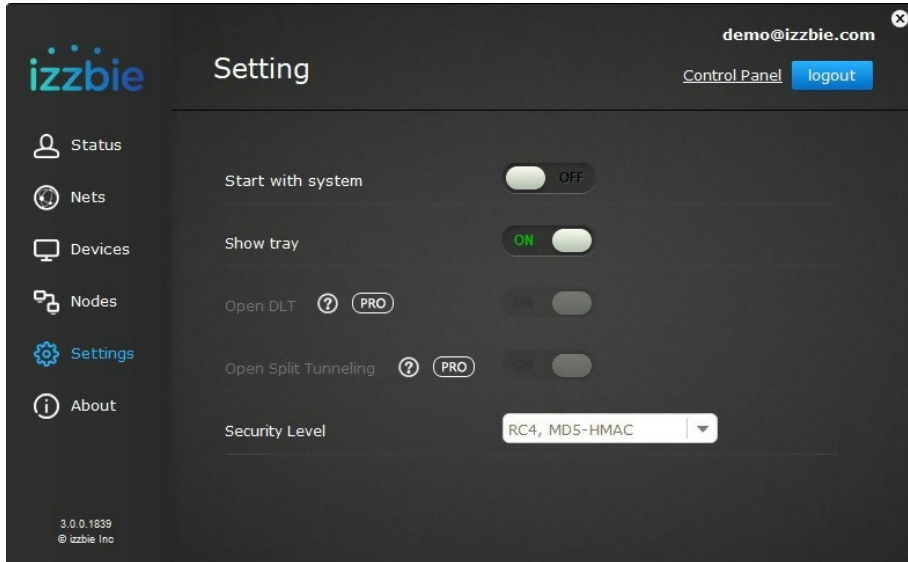
Selecting the “Settings” option on the “Main Menu” displays the “Settings” screen, shown in the illustration below. The following settings are available on this screen:

**Start with system:** "On" to start the app with system.

**Show tray:** "On" to display app on system tray.

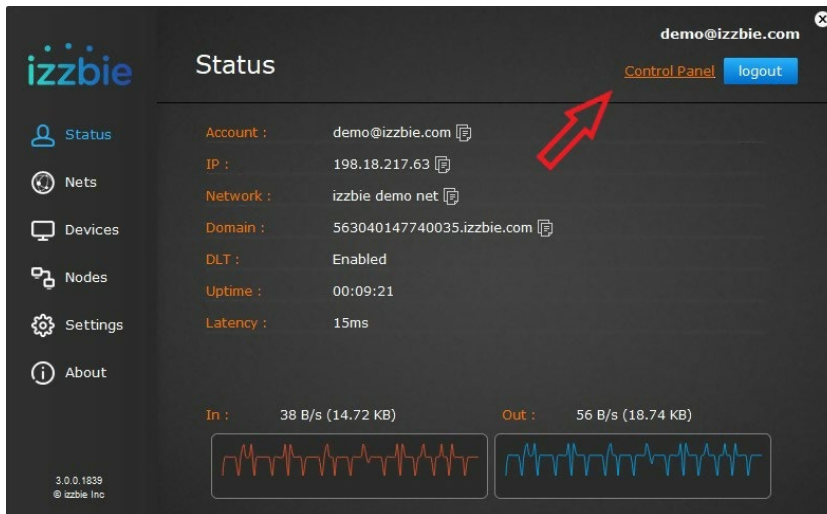
**Open DLT:** “ON” by default, communication would establish between devices directly, data not will not route through the izzbie gateway.

**Security Level:** Use this option to change encryption method.

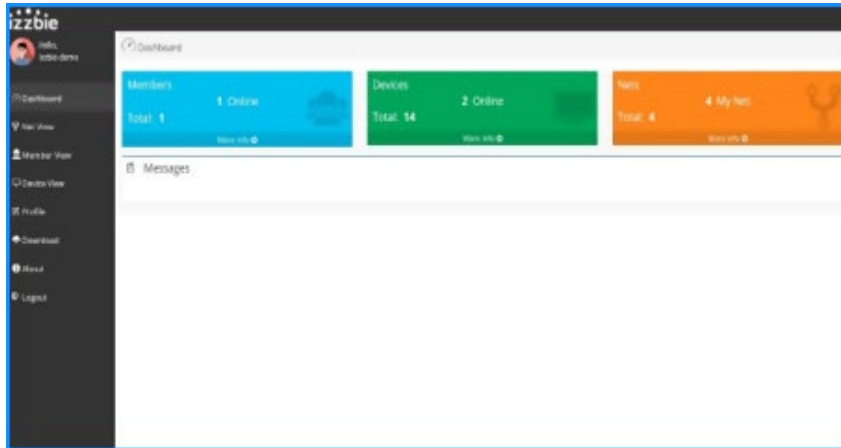


## Control Panel

Clicking “Control Panel” in the upper right-hand corner of any screen, as shown in the following illustration, allows you to manage Users, Nets, and Device Settings.

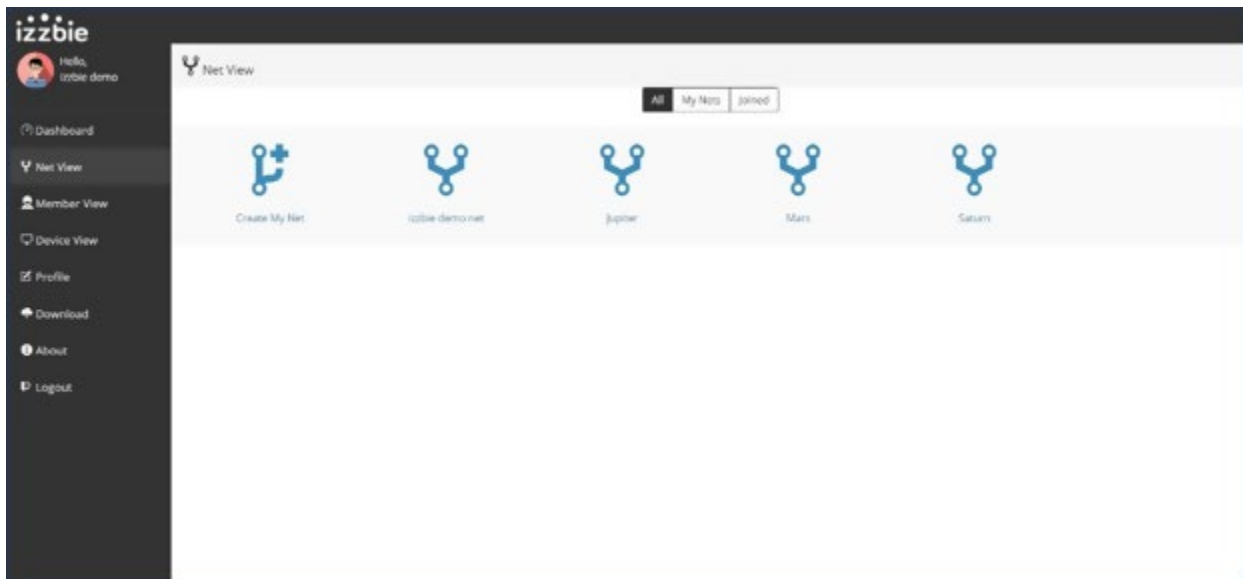


The “Control Panel Dashboard,” shown below, will be displayed. System messages would display here.



The “Net View” option on the “Control Panel” menu allows you to:

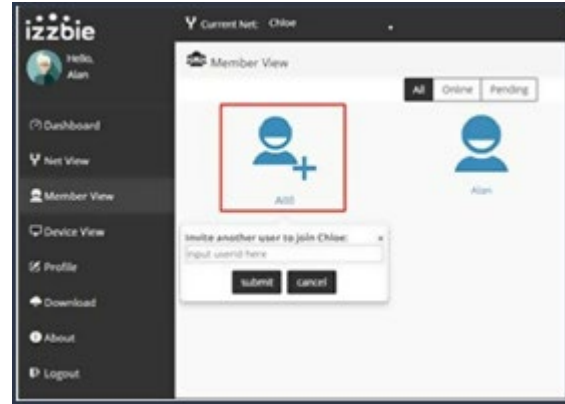
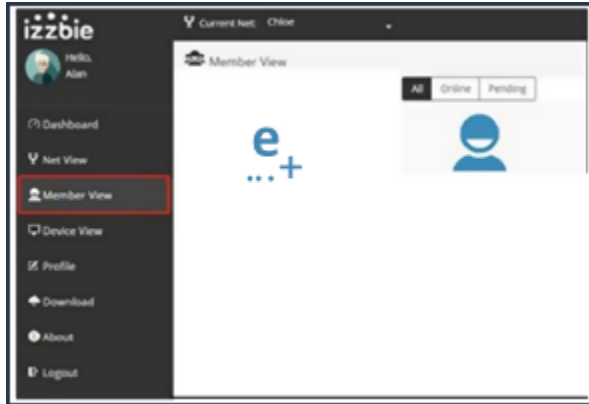
- Manage your virtual networks.
- Invite others to join your network.
- Join others’ networks.



## Control Panel Member View

Selecting the “Member View” option on the “Control Panel” menu displays the “Member View” screen, shown below. This screen allows you to:

- See all of the members that belong to your Net
- Invite other users to, and delete other users from, your Net.



### Control Panel Device View

Selecting the “Device View” option on the “Control Panel” menu displays the “Device View” screen, shown below. This screen allows you to:

- See all of the devices that are bound to your account.
- See all of the devices that are currently connected to the Net displayed in a blue color.
- See all of the devices that are not connected displayed in grey color.



- Devices with the izzbie app installed and logged in to the same user account are also within the Net.
- Devices include desktops, laptops, tablets, and smartphones.
- These devices are accessible without going through izzbie ONE.



**CHLOE-Office  
izzbie ONE**

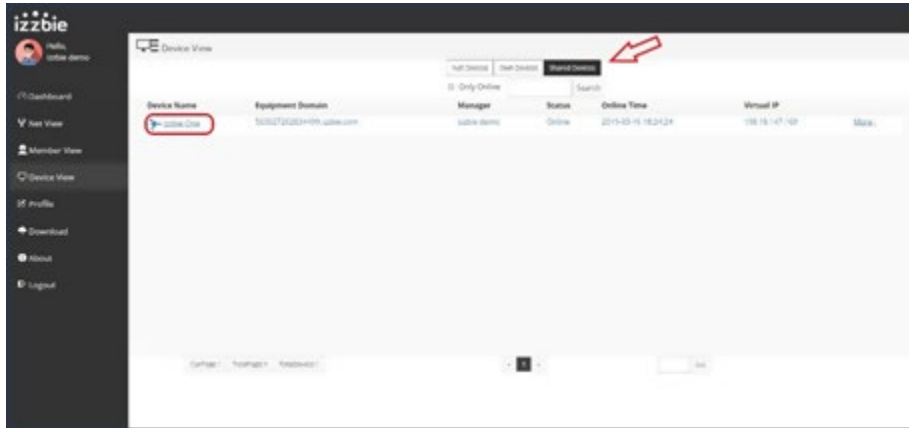
- This is the izzbie ONE icon. It connects a local area network subnet
- It allows remote access to devices that are not installed izzbie client (for example, print and IP camera)



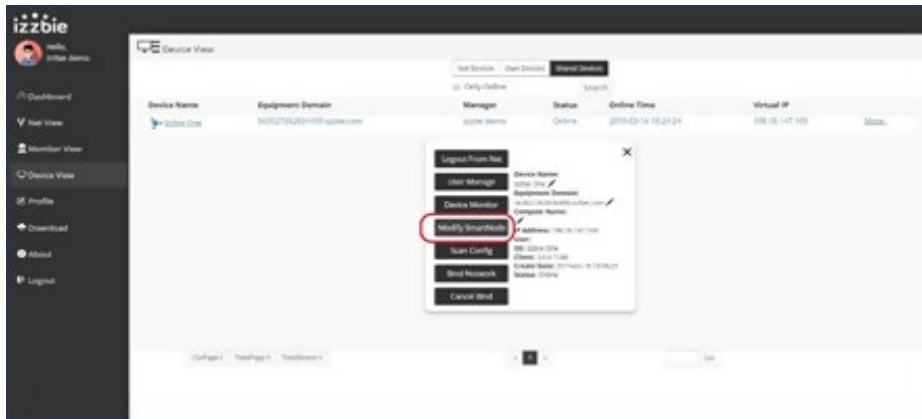
## Configure the izzbie ONE Device

In order for Subnet Devices to be accessible, you will need to first add them to the izzbie ONE.

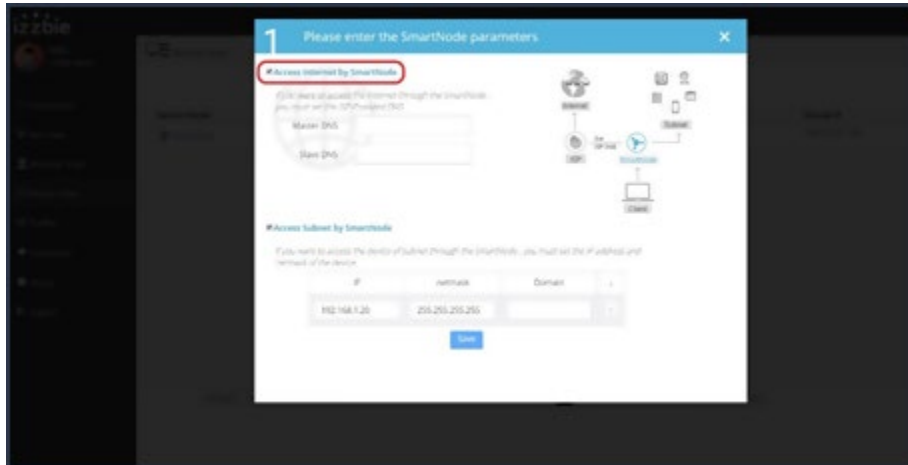
Select “Shared Devices” and click on the izzbie ONE “Device Name” for configuration purposes, as shown in the following illustration.



The following screen is displayed. As shown in the illustration, click “Modify SmartNode.”



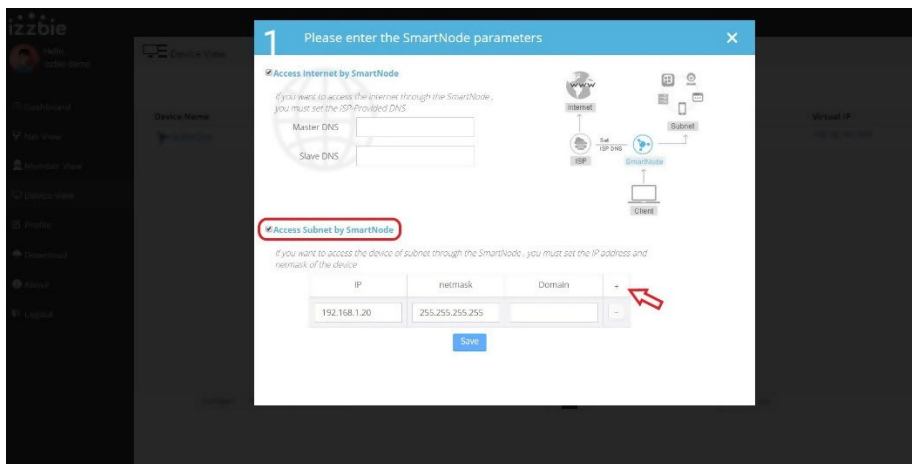
- For browsing the internet through a designated LAN, check “Access internet by SmartNode.”
- For allowing remote access the LAN devices, check “Access subnet by SmartNode,” and then click the “+” icon to add a Device IP address and 255.255.255.255 as Netmask.



## Add Remote Access Devices

To add Remote Access Devices, follow the steps below:

- Check the box next to "Access devices by SmartNode."
- Click the "+" icon, and then enter the Subnet IP address of the Devices that you want to access remotely.
- Enter 255.255.255.255 as the Netmask.
- Once you finish adding the Subnet IP and the Netmask, click "Save."
- The number of Subnet IPs that can be added is based on your Account Level. The Basic Account starts with three Subnet IPs.
- You can add Devices such as network printers, NAS, servers, IP cameras, etc.





<https://izzbie.com>

[info@izzbie.com](mailto:info@izzbie.com)

955 Alma St, Suite B  
Palo Alto, CA 94301